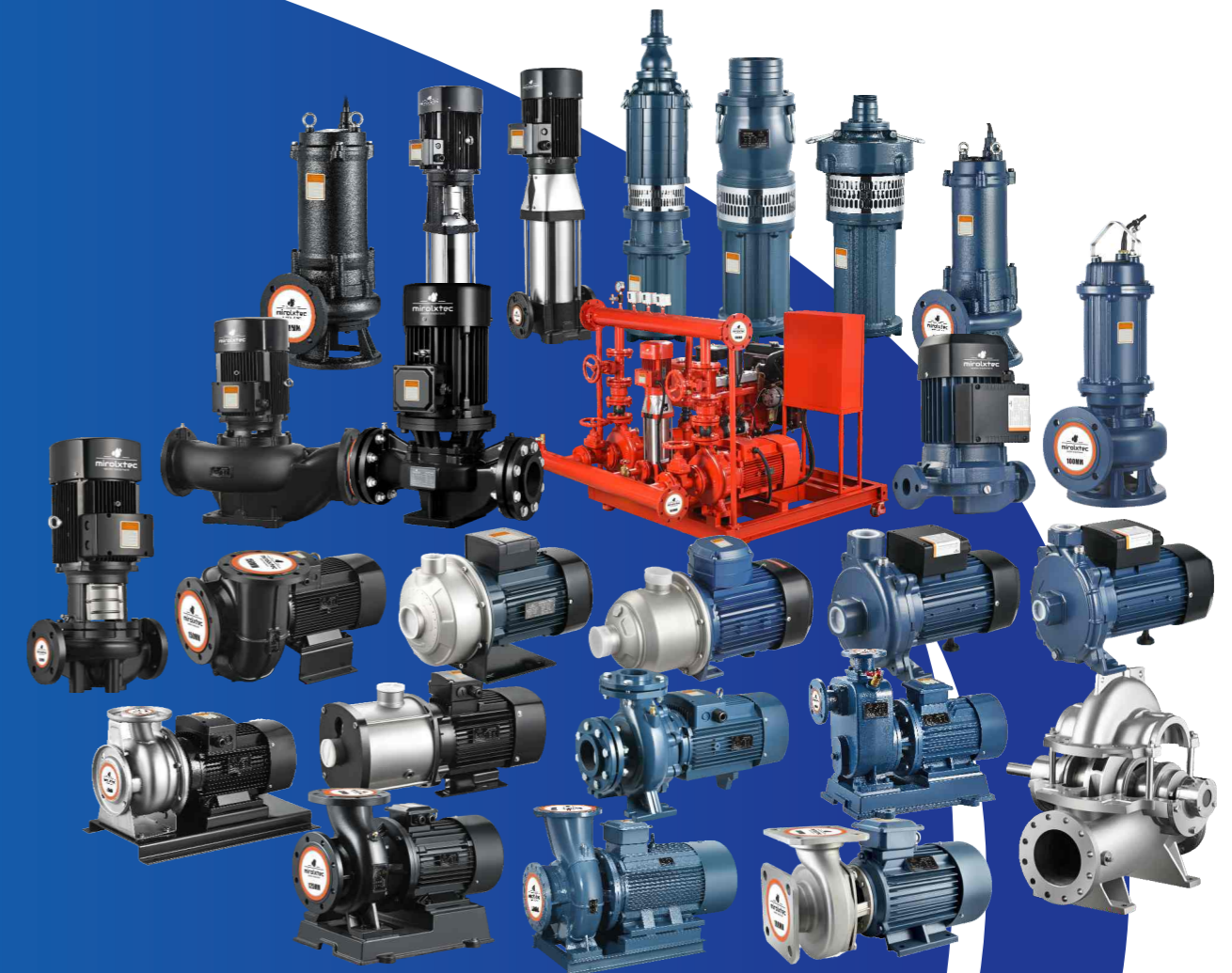


**PRODUCT
CATALOG**

Professional
pump
manufacturing



Mirolex B.V
Generaal Lemanstraat 55/2 2019 Antwerpen Belgium

Tel: +32 483 11 07 91
Mob: +32 474 05 02 55
www.mirolxtec.com
info@mirolxtec.com

Mirolex B.V reserves all the right of products modification without prior notification.

Mirolex B.V

COMPANY PROFILE

Mirolex B.V



About us

Professional pump manufacturing

Mirolex B.V Ltd is company for water treatment, specialized in water treatment, filtration, portable water treatment and sewage.

Mirolex B.V always searching the satisfaction of its customers by providing them with the best quality of the products and the following up.

COMPANY PROFILE

Founded to become the symbol of prestige, MIROLEX B.V acts in the field of environmental technologies; in turnkey contracting, designing, construction, equipment manufacturing and supply, installation and consultancy services. In all the solutions proposed, MIROLEX B.V considers impeccable, complete, true economical approaches of superior quality along with correct methods, prevailing details and functionality.

The company takes as part of its philosophy to conform the same sensitivity in all the tasks undertaken, regardless of the size.

Systems based on the scientific origins, commercial and technical principles and applications are the main elements that deliver energy to the company. It is its reputation arose in the sector that designated the main target of the company as to compete by only itself on the track it is in.

Conscious by its adage "the most precious capital: the impression left on the customer" the company has been awarded by many motherland and abroad projects. Besides, the company carried its vision to further horizons by the experiences and observations gained in many countries.



OUR CAPABILITIES

Our extensive range of technologies and services, coupled with its design and build capabilities meet the diverse needs of all municipal and industrial applications. It has an unequalled portfolio of technologies that covers various industry sectors.



MTCDL(F) STAINLESS STEEL VERTICAL MULTISTAGE CENTRIFUGAL PUMP

Technical data:

Capacity: 2~150m³/h
 Head: 13~247m
 Speed: 2900r/min
 Power: 0.37~75KW(0.5~100HP)
 DN: 25~ 125mm
 Material: SS304 / SS316

Application:

CDL is suitable for non-corrosive liquids, CDLF is suitable for mildly corrosive liquids.

- **Water Supply:** Water plant filtration and transmission, water plant zoning water delivery, main booster, high-rise building booster.
- **Industrial Pressurization :** Process water systems, cleaning systems high-pressure flushing systems, fire-fighting systems.
- **Industrial fluid transfer :** Cooling and air conditioning systems, boiler feed and condensing systems, machine tool sets, acids and alkalis.
- **Water treatment:** Ultrafiltration systems, reverse osmosis systems distillation systems, separators, swimming pool.
- **Irrigation:** Agricultural irrigation, sprinkler irrigation, drip irrigation.



MTTD SINGLE-STAGE IN-LINE CIRCULATION PUMP

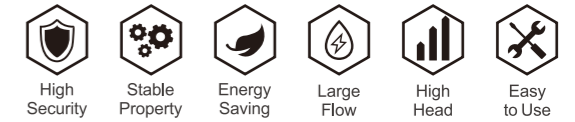
Technical data:

Capacity: 8~900m³/h
 Head: 9~85m
 Power: 0.75~200KW(1~300HP)
 Speed: 2900r/min, 1450 r/min
 DN: 32~ 300mm
 Material: Cast Iron

Application:

This series of products is suitable for use in clean, thin, non-aggressive, non-flammable and explosive liquids that do not contain any solid particles and fibers that could cause mechanical or chemical damage to the pump.

- Boiler feed water.
- Subdivision district water supply systems.
- Cell or block central heating systems.
- Water circulation systems for central air-conditioning for cooling purposes.
- Washing systems.
- Domestic hot water systems.
- General industrial water system.



MTMHI STAINLESS STEEL HORIZONTAL MULTISTAGE CENTRIFUGAL PUMP

Technical data:

Rated Capacity: 2~16m³/h
 Rated Head: 20~33m
 Max Capacity: 5~26m³/h
 Max Head: 22~48m
 Power: 0.37~2.2KW(0.5~3HP)
 Speed: 2900r/min
 DN: 25~50mm
 Material: SS304

Application:

- Water supply and pressurization.
- Hot water circulation and heating system.
- Air conditioning system.
- Industrial circulation system.
- Wash and spray irrigation system.
- Various machine matching.



MTCMI STAINLESS STEEL HORIZONTAL MULTISTAGE CENTRIFUGAL PUMP

Technical data:

Capacity: 1~20m³/h
 Head: 8~63m
 Power: 0.25~4KW(0.35~5.5HP)
 Speed: 2900r/min
 Inlet and outlet DIM: G1~G2
 Material: SS304

Application:

- Water treatment.
- Industrial washers and dishwashers.
- Process water pressurization, garden sprinkler irrigation.
- Industrial process water heating and cooling.
- machine tool cooling, lubrication.
- Air-conditioning systems, chillers.
- Air freshening, humidification equipment.
- Water supply and pressurization.
- Fertilizer application, metering systems.





MTCA(B)/MTCAG(B)

HORIZONTAL STAINLESS STEEL CENTRIFUGAL PUMP



Technical data:

Capacity: 12.5~320m³/h
 Head: 13~68m
 Power: 1.1~90KW(1.5~122HP)
 Speed: 2900r/min
 DN: 32~150mm
 Material: SS304

Application:

Industrial and urban water supply and drainage, high-rise building water pressure, garden sprinkler irrigation, fire-fighting pressure, long-distance transmission, HVAC refrigeration cycle, bathrooms and other cold and warm water circulation pressure and equipment.

MTMS HORIZONTAL SINGLE-STAGE CENTRIFUGAL PUMP



Technical data:

Rated Capacity: 4~15m³/h
 Rated Head: 13~25m
 Max Capacity: 4.8~31m³/h
 Max Head: 15.4~30.4m
 Power: 0.37~2.2KW(0.5~3HP)
 Speed: 2900r/min
 DN: 32~50mm
 Material: SS304

Application:

- Domestic water supply.
- Water treatment.
- Water circulation system.
- Gardens for drip irrigation, water sprinklers, water fountains, etc.
- Pressurization and pumping of clean water.
- Food & beverages industry.
- Pharmaceutical and biotech industry.

MTYST STANDARD CENTRIFUGAL PUMP

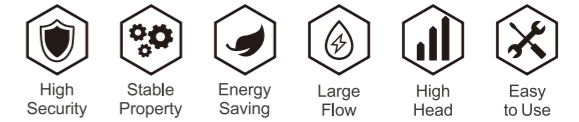


Technical data:

Max Capacity: 18~ 400m³/h
 Max Head: 17.5~144m
 Power: 0.75~90KW(1~120HP)
 Speed: 2900r/min
 DN: 32~150mm
 Stainless Steel / Cast Iron Impeller

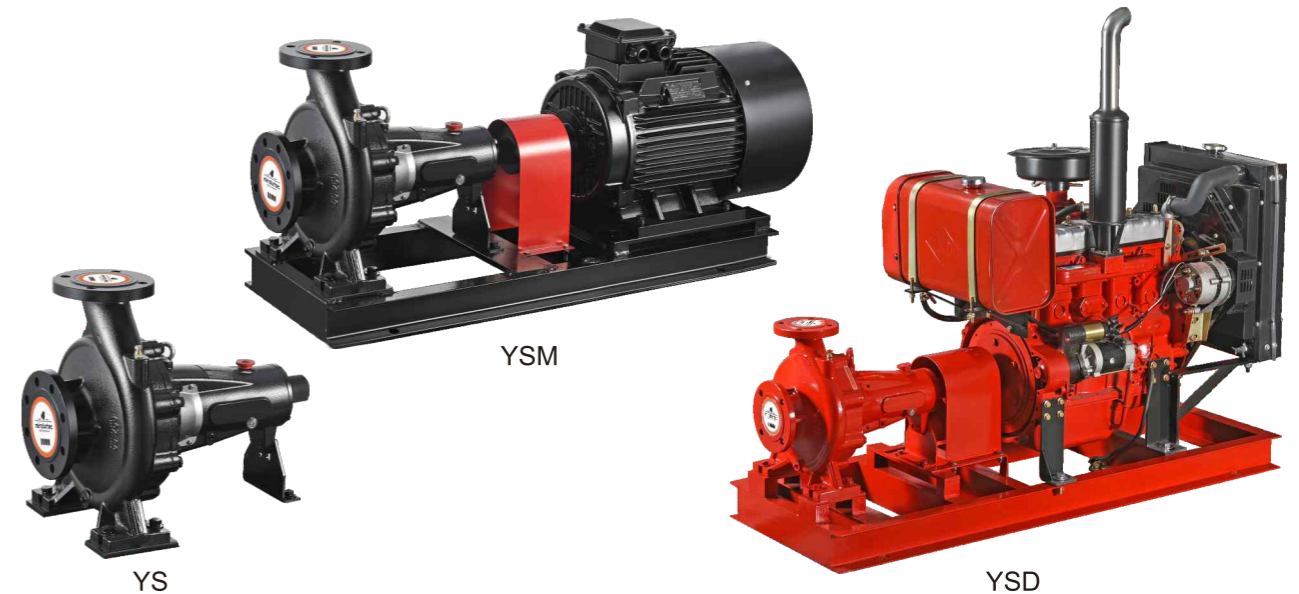
Application:

- Water Supply.
- Pressure Boosting.
- Industrial Water.
- Agricultural Water.
- Irrigation.
- Central Air-conditioning Circulation.
- Fire-fighting Water Supply.



MTYS/MTYSM/MTYSD

END SUCTION CENTRIFUGAL PUMP



Technical data:

Capacity: 0~ 1000m³/h
 Power: 1.5~315KW(2~422HP)
 DN: 32~200mm
 Stainless Steel /Cast Iron Impeller

Head: 0~164m
 Speed: 2900r/min

Application:

- Water Supply.
- Irrigation.
- Industrial Water.
- Central Air-conditioning Circulation.
- Pressure Boosting.
- Fire-fighting Water Supply.
- Agricultural Water.

MTYSC SPLIT-CASE PUMP

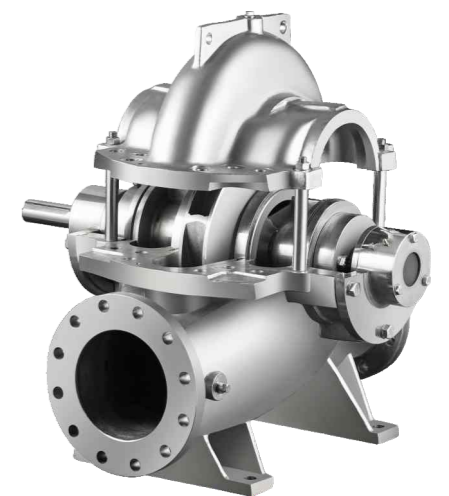
Technical data:

Max Capacity: 11160m³/h
 Power: 2.2~2000KW(3~2682HP)
 DN: 80~900mm
 Material: Cast Iron/Nodular Cast Iron/Cast Steel/ Stainless Steel

Max Head: 200m
 Speed: 2900r/min, 1450r/min

Application:

- Water plant water supply; Urban drainage and agricultural irrigation.
- Power plant circulating water; Water supply of hydropower station.
- Water supply and drainage of industrial and mining enterprises.
- Central air conditioning circulating water; Marine industry water.
- Various industrial process water, etc. Conveying corrosive media.
- Seawater desalination, steel mill debrine, brine transportation, etc.
- Conveying high temperature medium; Heat supply network circulating water, etc.



MTIRG /MTISW/ MTIHG/MTIHW

Single-stage Inline Centrifugal Pump

Technical data:

Capacity: 3.6~1200m³/h
Head:5~180m
Power: 0.75~250KW(1~335HP)
Speed: 2900r/min,1450r/min
DN:25~400mm
NSK Bearing,304 Stainless Steel Welded Shaft,
High Temperature Mechanical Seal

Application:

Metallurgy, chemical industry, textile, wood processing, paper making, hotels, bathrooms, hotels and other boiler high-temperature hot water pressurized circulation and delivery, as well as urban residential heating cycle.



MTYSG/MTYSW

DRY GRINDING RESISTANCE INLINE CENTRIFUGAL PUMP

Technical data:

Capacity: 3.6~143m³/h Head:10~80m
Power: 0.75~7.5KW(1~10HP)
Speed: 2900r/min DN:25~125mm
NSK Bearing,304 Stainless Steel Welded Shaft,
High Temperature Mechanical Seal.

Application:

Metallurgy, chemical industry, textile, wood processing, paper making, hotels, bathrooms, hotels and other boiler high-temperature hot water pressurized circulation and delivery, as well as urban residential heating cycle.



MTLT/MTWLT

CLOSED COOLING TOWER SPECIAL PUMP

Technical data:

Capacity: 35~350m³/h
Head: 3~8m
Power: 0.75~15KW(1~20HP)
Speed: 2825r/min, 1450r/min
DN:65~200mm
NSK Bearing,304 Stainless Steel Welded Shaft,
High Temperature Mechanical Seal

Application:

- Water circulation in closed cooling towers and condensers.
- Cooling for various machines and equipment.
- Normal water supply.



MTPH

SMALL PIPE PUMP

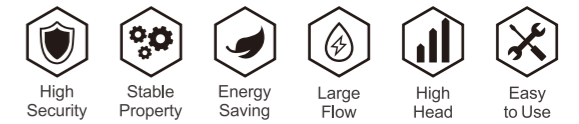


Technical data:

Rated Capacity: 2~18.5m³/h
Max Capacity: 3.6~28m³/h
Rated Head:2.5~20m
Max Head:3.5~30m
Speed: 2900r/min
Power: 40~2200W(0.05~3HP)
DN:25~65mm

Application:

- Hot water circulation and heating systems.
- Air conditioning systems.
- Industrial Circulation Systems.
- Domestic Water Pressurization.



MTPUN

CENTRIFUGAL BOOSTER PUMP

Technical data:

Rated Capacity: 3~16m³/h Max Capacity: 5~28m³/h
Rated Head:10~20m Max Head:16~24m
Power: 200~1500W(0.27~2HP)
Speed: 2900r/min DN:25~40mm

Application:

- Various machine matching.
- Home and garden water supply.
- Small HVAC circulation system.



MTCPM

CENTRIFUGAL PUMP

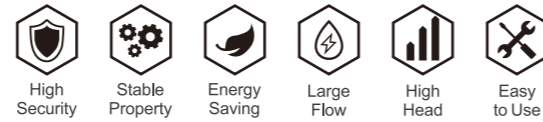


Technical data:

Max Capacity: 3.5~73m³/h
Max Head:14~33m
Power: 0.37~2.2KW(0.5~3HP)
Speed: 2900r/min
DN:25~100mm

Application:

- Suitable for use with clean water and liquids that are not chemically aggressive towards the materials from which the pump is made.
- Widely used in domestic and civil applications such as garden irrigation, vegetable greenhouse water supply, breeding industry water supply and drainage, various corollary equipment, etc.



MTHSF SERIES SPECIAL SEAWATER PUMP



Technical data:

Rated Capacity: 25~120m³/h Max Capacity: 65~160m³/h
 Rated Head: 13.5~25m Max Head: 17~33.5m
 Power: 1.5~11KW(2~15HP)
 Speed: 2900r/min DN: 100 & 150mm
 304 Stainless Steel Pump Body & Impeller, NSK Bearing,
 304 Stainless Steel Welded Shaft, Mechanical Seal

Application:

Seawater Desalination, Mariculture, Chemical & Pharmaceutical, Industrial Effluent, Sewage Treatment.

MTBZ SELF-PRIMING CENTRIFUGAL PUMP FOR CLEAN WATER



Technical data:

Capacity: 10~100m³/h Head: 15~50m
 Suction Head: 5-7m Power: 1.5~22KW(2~30HP)
 Speed: 2900r/min DN: 40~100mm
 NSK Bearing, 304 Stainless Steel Welded Shaft,
 High Temperature Mechanical Seal

Application:

City environmental protection, greenhouse sprinkler irrigation, construction, fire, chemical, pharmaceutical, dyes and printing and dyeing, brewing, electric power, electroplating, paper-making, petroleum, mining, equipment cooling and so on.

MTZW DIRECT COUPLING TYPE SELF-PRIMING CENTRIFUGAL PUMP FOR SEWAGE

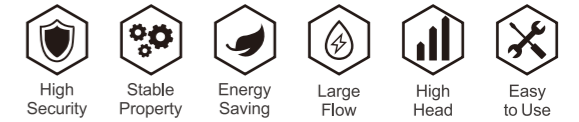


Technical data:

Capacity: 8~180m³/h Head: 14~55m
 Suction Head: 5-7m Power: 1.5~22KW(2~30HP)
 Speed: 2900r/min, 1450r/min DN: 40~100mm
 NSK Bearing, 304 Stainless Steel Welded Shaft,
 High Temperature Mechanical Seal

Application:

Municipal sewage treatment, domestic sewage, greenhouse sprinkler irrigation, construction, fire, chemical, pharmaceutical, dyeing and printing and dyeing brewing, electric power, electroplating, paper-making, petroleum, mining, equipment cooling and so on.



MTYPM PERIPHERAL PUMP

Technical data:

Rated Capacity: 1.8~2.8m³/h Max Capacity: 3~4.2m³/h
 Rated Head: 20~30m Max Head: 60~85m
 Max Suction Head: 8m Power: 0.6~1.1KW(0.8~1.5HP)
 Speed: 2900r/min DN: 25mm

Application:

- Can be used to transfer clean water or other liquids similar to water in physical and chemical properties.
- Suitable for small living water supply, automatic water sprinkler system, small air conditioner system or supporting equipment etc.



MTW VORTEX PUMPS

Technical data:

Capacity: 2~10m³/h
 Head: 20~30m
 Power: 2.2~15KW(3~20HP)
 Speed: 2900r/min
 DN: 25~50mm

Application:

This pump has advantages of small volume, light weight, simple structure, easy installation, etc. It is an ideal high-efficiency and energy-saving type electric pump. It is suitable for small boiler water supply, high-rise building watering, and also widely used in shipbuilding, light textile, chemical industry, metallurgy, machinery manufacturing, aquaculture, solid fire pressure stabilization, heat exchange unit, agricultural remote sprinkler irrigation and other occasions.



Thread Connection Type



Flange Connection Type

MTJET/MTJSW SELF-PRIMING PUMP

Technical data:

Max Capacity: 50~80L/min
 Max Head: 38~55m
 Max Suction Head: 8~9m
 Power: 0.55~1.5KW(0.75~2HP)
 Speed: 2900r/min
 DN: 25mm

Application:

Suitable for transferring water without abrasive particles or other liquid whose properties are similar to water. Widely used in well water lifting, garden irrigation, vegetable greenhouse water supply, breeding industry water supply and drainage, pipeline boosting, etc.





MTQY OIL-IMMERSED MULTISTAGE SUBMERSIBLE PUMP



Technical data:

Capacity: 10~450m³/h
 Head: 4~220m
 Power: 2.2~22KW(3~30HP)
 Speed: 2860r/min
 DN: 50~250mm

Application:

Drainage and irrigation, well irrigation, sprinkler irrigation of farmland and garden; water lifting from wells, water tower water delivery; water logging and flood control; drainage of the bottom of ships' warehouses; water supply and drainage of urban construction, industry and mines.

MTWQK CUTTING SUBMERSIBLE SEWAGE PUMPS

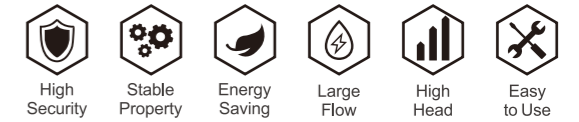


Technical data:

Capacity: 7~220m³/h
 Head: 9~55m
 Power: 1.1~15KW(1.5~20HP)
 Speed: 2860r/min
 DN:50~200mm

Application:

- WQK Cutting Submersible Sewage Pumps is mainly used for engineering sewage and domestic sewage.
- Used in construction sites, engineering foundation construction, municipal facilities and waterworks.
- Underground sewage discharge in basements, civil air defense pits and subways of various high-rise buildings.
- Sewage treatment and circulating water transportation in small and medium- sized enterprises.
- Slag slurry pumping in food, paper making, brewing, iron and steel, nonferrous metals, leather making, textile, pharmaceutical, cement plants and other factories and mines.
- Chicken farms, pig farms, various breeding industries, fish ponds are used for pumping water, clearing ponds and oxygenation. In septic tanks are used for pumping human, animal excrement and urine.



MTWQ/MTJYWQ

SUBMERSIBLE SEWAGE PUMP

Technical data:

Capacity: 7~220m³/h Head: 9~55m
 Power: 0.75~90KW(1~120HP)
 Speed: 2860r/min, 1450r/min, 980r/min
 DN:50~500mm

Application:

Widely used in industry, agriculture, mining, civil construction, municipal environmental protection and other places. It is the ideal equipment for pumping mud, grey slurry, domestic wastewater, sewage manure and solid particles containing short fibre, paper, mud and sand, as well as for rural drainage and irrigation and dredging of lotus ponds.



MTDGWQ DOUBLE-KNIFE HIGH HEAD CUTTING SUBMERSIBLE SEWAGE PUMP

Technical data:

Capacity: 6~10m³/h Head: 10~28m
 Power: 0.75~2.2KW(1~3HP) Speed: 2860r/min
 DN:50mm

Application:

- Used in construction sites, engineering foundation construction, municipal facilities and waterworks.
- Underground sewage discharge in basements, civil air defense pits and subways of various high-rise buildings.
- Sewage treatment and circulating water transportation in small and medium- sized enterprises.
- Slag slurry pumping in food, paper making, brewing, iron and steel, nonferrous metals, leather making, textile, pharmaceutical, cement plants and other factories and mines.
- Chicken farms, pig farms, various breeding industries, fish ponds are used for pumping water, clearing ponds and oxygenation. In septic tanks are used for pumping human, animal excrement and urine.



MTQDX SMALL SUBMERSIBLE PUMP

Technical data:

Capacity: 1.2~80m³/h Head:6~38m
 Power: 0.25~3KW(0.35~4HP) Speed: 2900r/min
 DN: 25~100mm

Application:

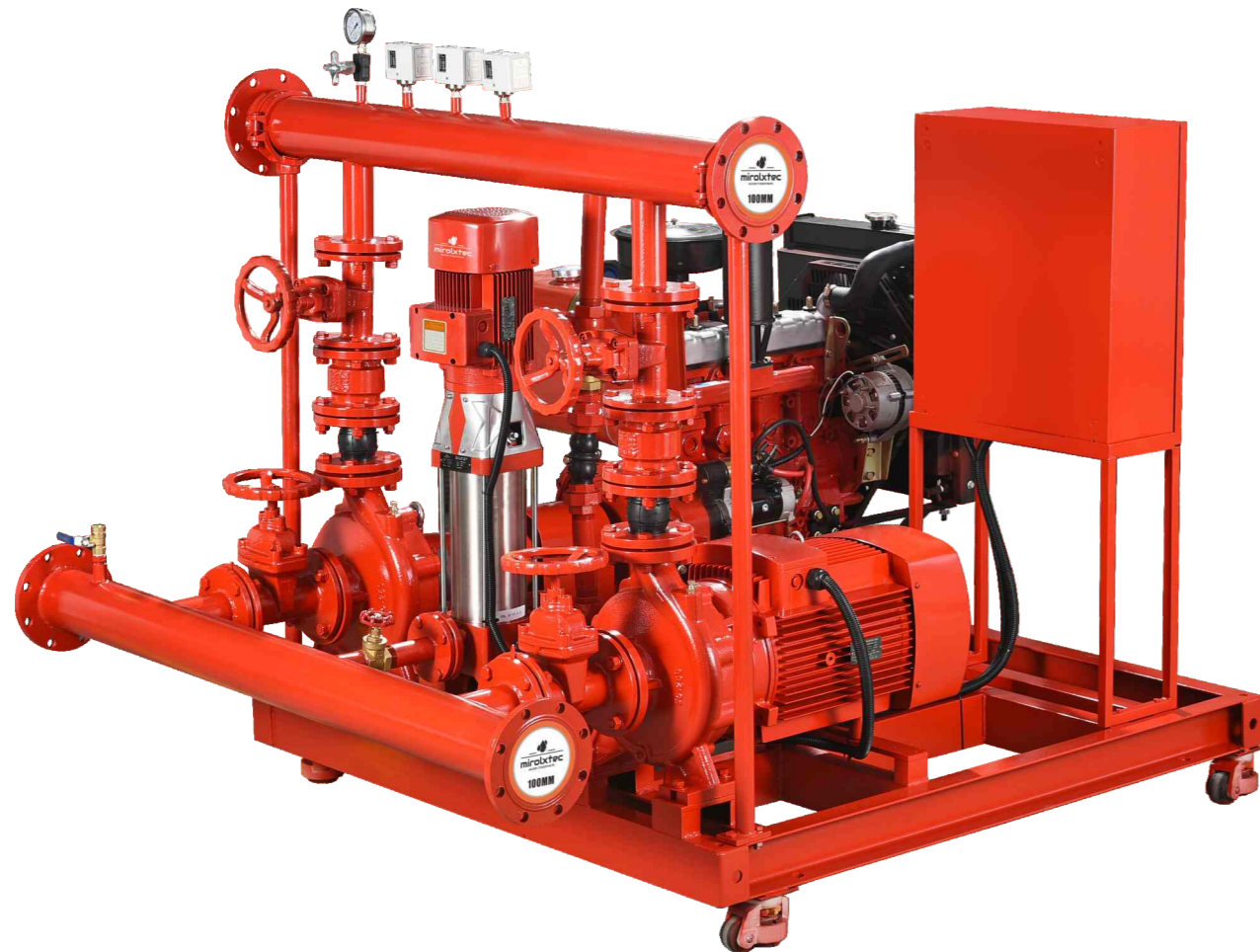
- Rural well pumping.
- Agricultural irrigation.
- Garden watering.
- Household water.
- Drainage of industrial water.
- Building construction water supply and drainage and aquaculture.





MTYEDJ

FIRE FIGHTING SYSTEM



Technical data:

MTYEDJ: Fire pump set consists of Electric pump+Diesel pump+Jockey pump and all accessories

MTYDJ: Fire pump set consists of Diesel pump+Jockey pump and all accessories

MTYEJ: Fire pump set consists of Electric pump+Jockey pump and all accessories

MTYEEJ: Fire pump set consists of Electric pump+ Electric pump+Jockey pump and all accessories

Capacity: 50~1500GPM

Head: 6~14Bar

Speed: 2900r/min

DN: 50~150mm

Description:

Fire pumps are designed for whole operational life, the maximum reliability is always the first priority

The components affixed onto a steel framing structure

Each controller has its own individual pressure sensing line

The suction line should never include a strainer

Check valve and butterfly valve in the discharge line

NFPA 20 not allows suction from negative level for end suction and split case pumps

CONTROLLER

Description:

- Equipped with Smartgen display screen, integrates digitalization, intellectualization and network technologies for precise data measurement, alarm protection, remote control, measuring and communication
- DOL or Star Delta starter
- All controllers completely assembled, wired, and tested
- Self-acting to start, run, and protect the driver
- Automatic or manual operation options

Application:

Fire pump controllers are used to monitor and to start and stop fire pumps.



Other accessories:

